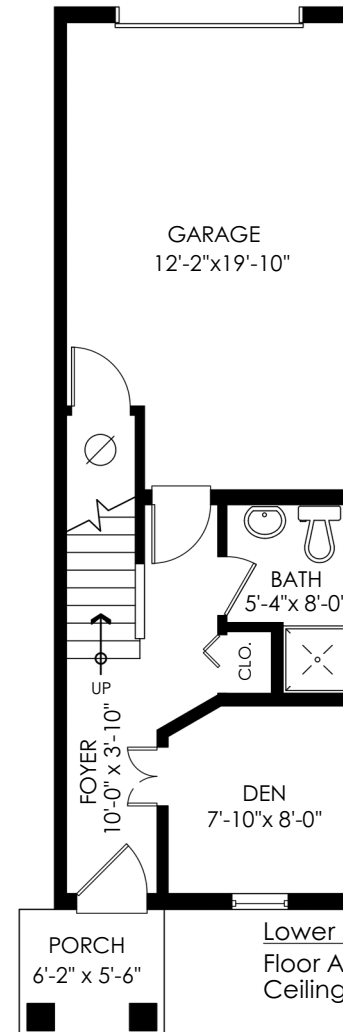
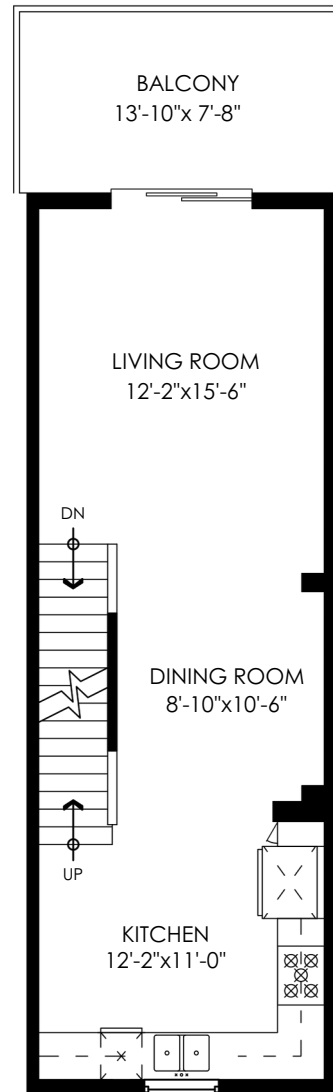
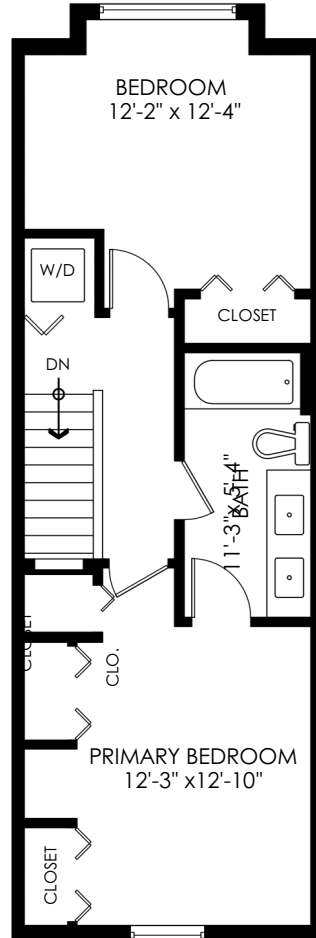


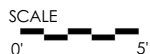


THE
CHRISTIES
REAL ESTATE TEAM

74-2428 Nile Gate, Port Coquitlam



Main Floor:	504 sq.ft.
Upper Floor:	516 sq.ft.
Lower Floor:	248 sq.ft.
Total Livable:	1,268 sq.ft.
Garage:	256 sq.ft.
Grand Total:	1,524 sq.ft.
Balcony:	106 sq.ft.
Porch:	34 sq.ft.
Total Extras:	140 sq.ft.



MEASURED ON: (2026-01-15)

info@pixlworks.com www.pixlworks.com 604.329.5788

E&O Insured. Total square foot calculated to gross unit area. SQFT based on interior measurements to exterior walls, not taken from original blueprints, may include unfinished area. This is for marketing purposes only and is not intended for architectural/construction use. All details, sizes & placements should be considered approximate within +/- 2% tolerance.

