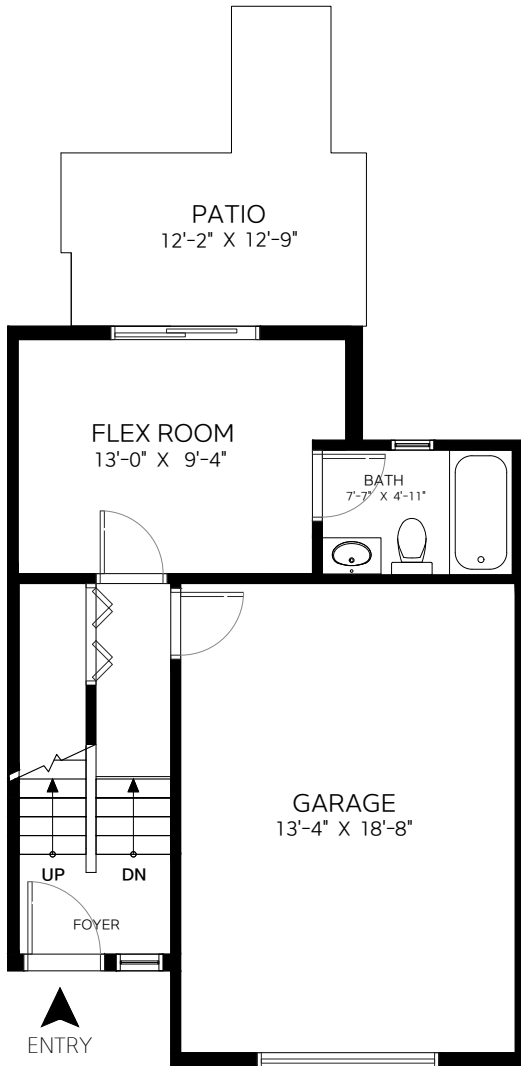


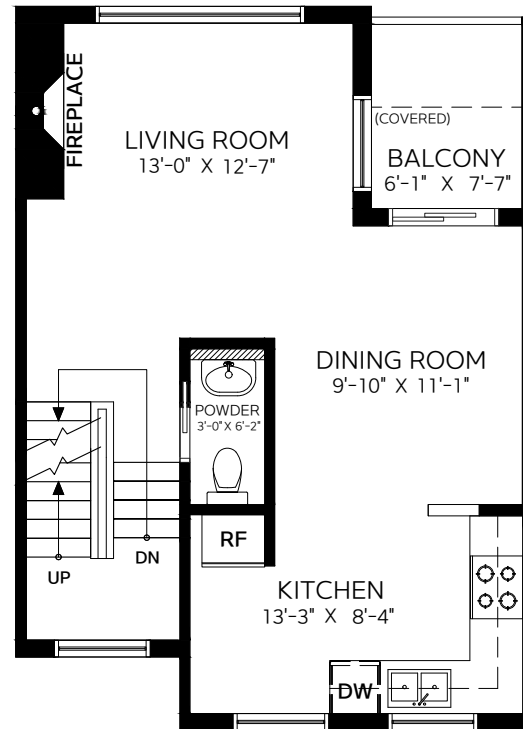
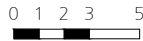


LIVING AREA	1,323 SF
MAIN FLOOR	522 SF
UPPER FLOOR	519 SF
LOWER FLOOR	282 SF

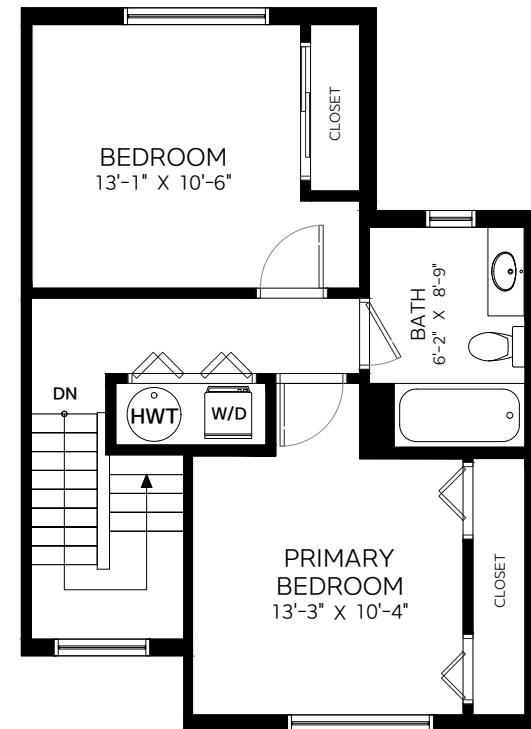
AUXILIARY AREA	428 SF
GARAGE	273 SF
PATIO	106 SF
BALCONY	49 SF



Lower Floor
Ceiling Height: 8'



Main Floor
Ceiling Height: 8'



Upper Floor
Ceiling Height: 8'

Valid Until: October 29, 2024



All dimensions are approximate and not suitable for architectural/construction use. This is for marketing purposes only. The measurements are approximate within +/- 2%, E&O insured. Total square footage might be kept consistent with strata plan. It might include unfinished area.