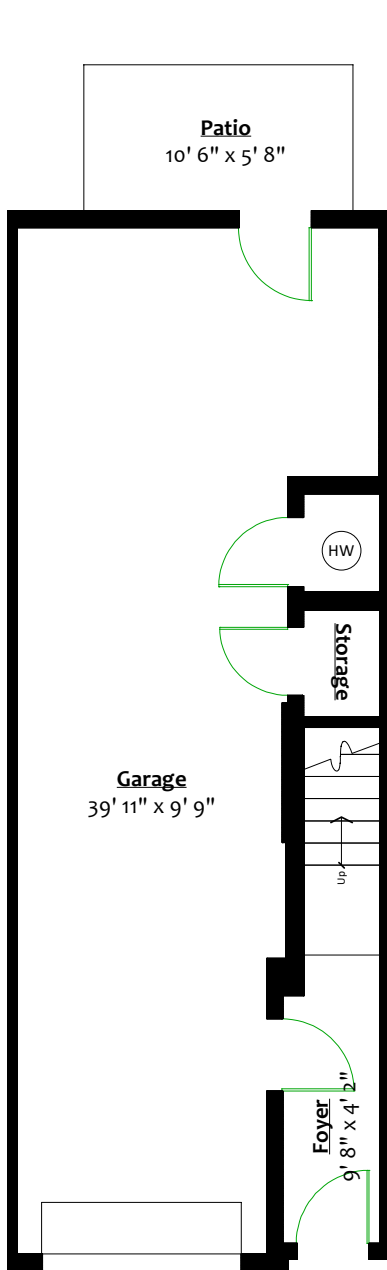




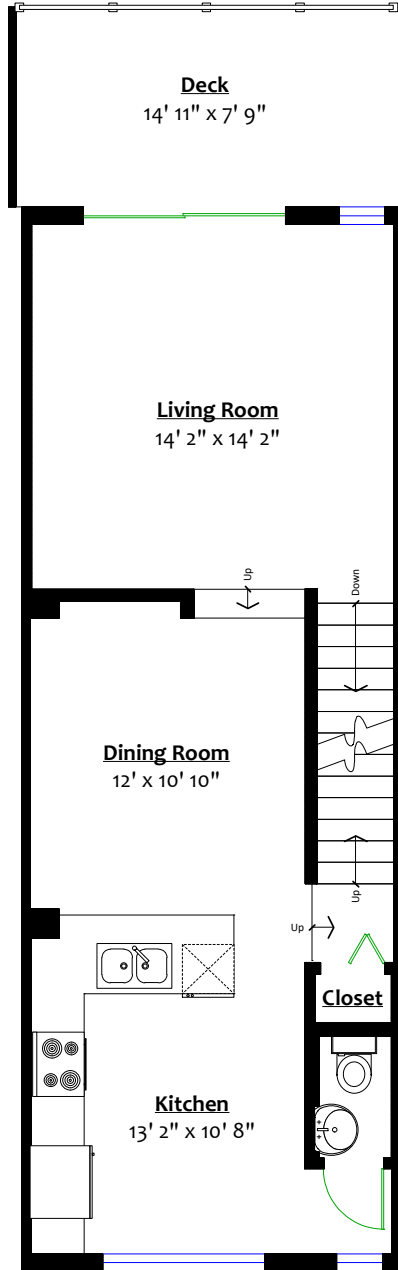
**#45 – 2380 Ranger Lane,
Port Coquitlam, B.C.**

Totals**

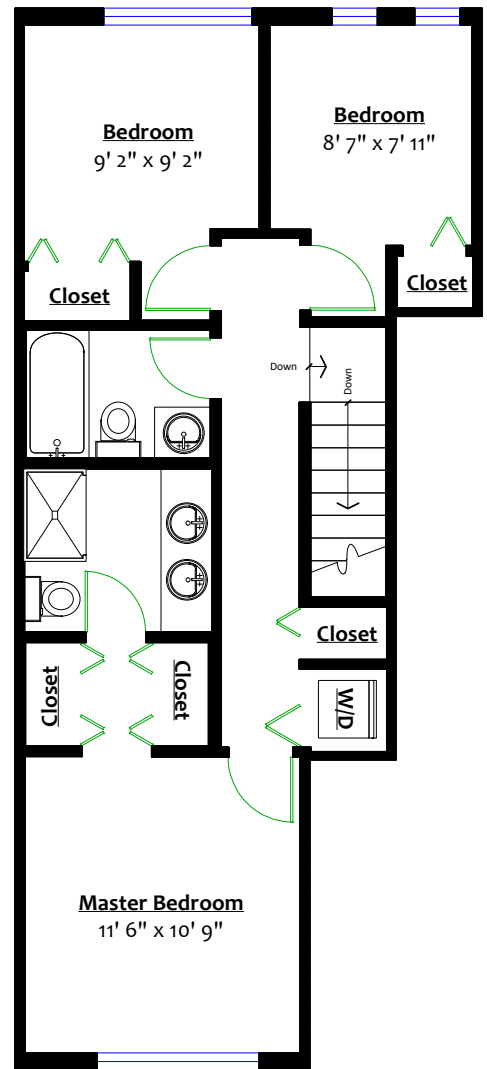
Main Level:	613 sq. ft.	Garage:	516 sq. ft.
Upper Level:	611 sq. ft.	Patio:	59 sq. ft.
Lower Level:	91 sq. ft.	Deck:	116 sq. ft.
Total:	1,315 sq. ft.	Total:	691 sq. ft.



LOWER LEVEL
Floor Area: 91 Sq. Ft.



MAIN LEVEL
Floor Area: 613 Sq. Ft.



UPPER LEVEL
Floor Area: 611 Sq. Ft.

