

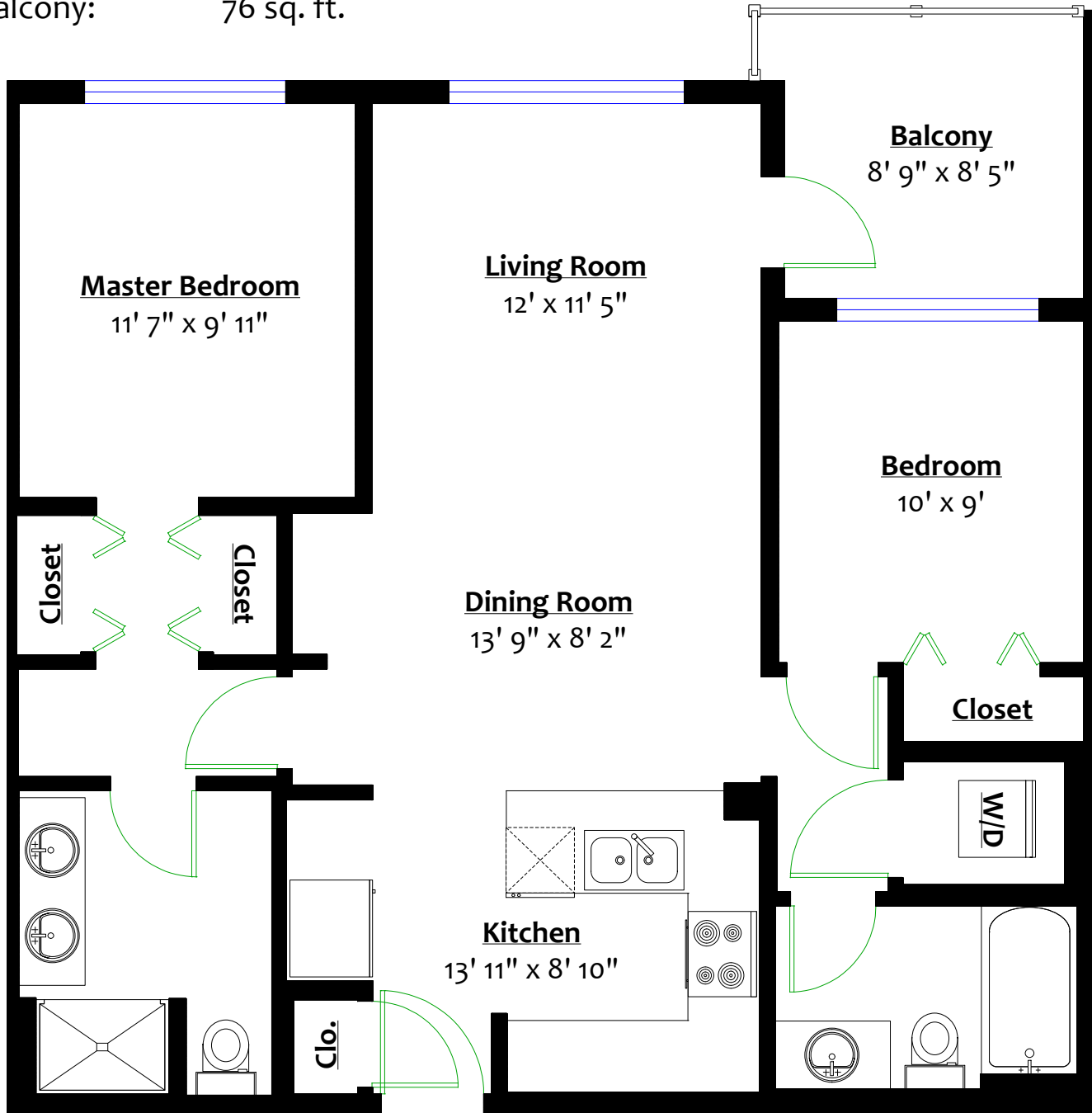
# #307 – 2307 Ranger Lane, Coquitlam, B.C.



## Totals\*\*

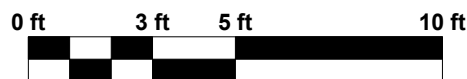
Main Level: 906 sq. ft.

Balcony: 76 sq. ft.



## MAIN LEVEL

Floor Area: 906 Sq. Ft.



\*\* Approx. based on interior measurements to exterior walls  
\*\* Total square footage not taken from original blueprints